

## Test Report

No. CANEC0802604501

Date: 29 May 2008

Page 1 of 6

KANSAI IZUMI CO.,LTD  
477-1,ROKUBUICHI,INAMICHO  
KAKO,HYOGO PREF.675-1112  
JAPAN

The following sample(s) was/were submitted and identified on behalf of the clients as :  
KSL, KSM, KS, KSML

SGS Job No. : 11031785 - SZ  
SGS Internal Reference No. : 4.1  
Date of Sample Received : 23 May 2008  
Testing Period : 23 May 2008 - 29 May 2008  
Test Requested : Selected test(s) as requested by client.  
Test Method : Please refer to next page(s).  
Test Results : Please refer to next page(s).  
Conclusion : A: Based on the performed tests on submitted sample(s), the results **comply with** the RoHS Directive 2002/95/EC and its subsequent amendments.

Signed for and on behalf of  
SGS-CSTC Ltd.



Huang Fang, Sunny  
Sr. Engineer

This document is issued by the Company under its General Conditions of Service printed overleaf or available on request and accessible at [http://www.sgs.com/terms\\_and\\_conditions.htm](http://www.sgs.com/terms_and_conditions.htm). Attention is drawn to the limitation of liability, indemnification and jurisdiction issues defined therein. Any holder of this document is advised that information contained hereon reflects the Company's findings at the time of its intervention only and within the limits of Client's instructions, if any. The Company's sole responsibility is to its Client and this document does not exonerate parties to a transaction from exercising all their rights and obligations under the transaction documents. Any unauthorized alteration, forgery or falsification of the content or appearance of this document is unlawful and offenders may be prosecuted to the fullest extent of the law. Unless otherwise stated the results shown in this test report refer only to the sample(s) tested and such sample(s) are retained for 30 days only. This document cannot be reproduced except in full, without prior approval of the Company.

# Test Report

No. CANEC0802604501

Date: 29 May 2008

Page 2 of 6

## Test Results:

ID for specimen 1 : CAN08-026045.001  
 Description for specimen 1 : Brown plastic bubble sheet

### A: RoHS Directive 2002/95/EC

Test Item(s)	Unit	Test Method (Reference)	Result	MDL	Limit
Cadmium (Cd)	mg/kg	IEC 62321/2nd CDV (111/95/CDV), ICP-OES	N.D.	2	100
Lead (Pb)	mg/kg	IEC 62321/2nd CDV (111/95/CDV), ICP-OES	N.D.	2	1000
Mercury (Hg)	mg/kg	IEC 62321/2nd CDV (111/95/CDV), ICP-OES	N.D.	2	1000
Hexavalent Chromium (CrVI) by alkaline extraction	mg/kg	IEC 62321/2nd CDV (111/95/CDV), UV-Vis	N.D.	2	1000
Sum of PBBs	mg/kg	-	N.D.	-	1000
Monobromobiphenyl	mg/kg	IEC 62321/2nd CDV (111/95/CDV), GC-MS	N.D.	5	
Dibromobiphenyl	mg/kg	IEC 62321/2nd CDV (111/95/CDV), GC-MS	N.D.	5	
Tribromobiphenyl	mg/kg	IEC 62321/2nd CDV (111/95/CDV), GC-MS	N.D.	5	
Tetrabromobiphenyl	mg/kg	IEC 62321/2nd CDV (111/95/CDV), GC-MS	N.D.	5	
Pentabromobiphenyl	mg/kg	IEC 62321/2nd CDV (111/95/CDV), GC-MS	N.D.	5	
Hexabromobiphenyl	mg/kg	IEC 62321/2nd CDV (111/95/CDV), GC-MS	N.D.	5	
Heptabromobiphenyl	mg/kg	IEC 62321/2nd CDV (111/95/CDV), GC-MS	N.D.	5	
Octabromobiphenyl	mg/kg	IEC 62321/2nd CDV (111/95/CDV), GC-MS	N.D.	5	
Nonabromobiphenyl	mg/kg	IEC 62321/2nd CDV (111/95/CDV), GC-MS	N.D.	5	
Decabromobiphenyl	mg/kg	IEC 62321/2nd CDV (111/95/CDV), GC-MS	N.D.	5	
Sum of PBDEs(Mono to Nona) (Note 4)	mg/kg	-	N.D.	-	1000
Monobromodiphenyl ether	mg/kg	IEC 62321/2nd CDV (111/95/CDV), GC-MS	N.D.	5	
Dibromodiphenyl ether	mg/kg	IEC 62321/2nd CDV (111/95/CDV), GC-MS	N.D.	5	
Tribromodiphenyl ether	mg/kg	IEC 62321/2nd CDV (111/95/CDV), GC-MS	N.D.	5	
Tetrabromodiphenyl ether	mg/kg	IEC 62321/2nd CDV (111/95/CDV), GC-MS	N.D.	5	
Pentabromodiphenyl ether	mg/kg	IEC 62321/2nd CDV (111/95/CDV), GC-MS	N.D.	5	
Hexabromodiphenyl ether	mg/kg	IEC 62321/2nd CDV (111/95/CDV), GC-MS	N.D.	5	
Heptabromodiphenyl ether	mg/kg	IEC 62321/2nd CDV (111/95/CDV), GC-MS	N.D.	5	
Octabromodiphenyl ether	mg/kg	IEC 62321/2nd CDV (111/95/CDV), GC-MS	N.D.	5	
Nonabromodiphenyl ether	mg/kg	IEC 62321/2nd CDV (111/95/CDV), GC-MS	N.D.	5	
Decabromodiphenyl ether	mg/kg	IEC 62321/2nd CDV (111/95/CDV), GC-MS	N.D.	5	
Sum of PBDEs(Mono to Deca)	mg/kg	-	N.D.	-	

### Note:

1. mg/kg = ppm
2. N.D. = Not Detected (< MDL)
3. MDL = Method Detection Limit
4. Sum of Mono to NonaBDE & according to 2005/717/EC DecaBDE is exempt.
5. "-" = Not regulated

This document is issued by the Company under its General Conditions of Service printed overleaf or available on request and accessible at [http://www.sgs.com/terms\\_and\\_conditions.htm](http://www.sgs.com/terms_and_conditions.htm). Attention is drawn to the limitation of liability, indemnification and jurisdiction issues defined therein. Any holder of this document is advised that information contained hereon reflects the Company's findings at the time of its intervention only and within the limits of Client's instructions, if any. The Company's sole responsibility is to its Client and this document does not exonerate parties to a transaction from exercising all their rights and obligations under the transaction documents. Any unauthorized alteration, forgery or falsification of the content or appearance of this document is unlawful and offenders may be prosecuted to the fullest extent of the law. Unless otherwise stated the results shown in this test report refer only to the sample(s) tested and such sample(s) are retained for 30 days only. This document cannot be reproduced except in full, without prior approval of the Company.

## Test Report

No. CANEC0802604501

Date: 29 May 2008

Page 3 of 6

### B: Heavy metal(s)

Test Item(s)	Unit	Test Method (Reference)	Result	MDL
Total Chromium	mg/kg	EPA 3052:1996, ICP-OES	N.D.	2

**Note:**

1. mg/kg = ppm
2. N.D. = Not Detected (< MDL)
3. MDL = Method Detection Limit

### C: PFOA & PFOS ( Perfluorooctanoic acid & Perfluorooctane sulfonates )

Test Item(s)	Unit	Test Method (Reference)	Result	MDL
Extractable Perfluorooctanoic acid (PFOA)	mg/kg	EPA 3540C: 1996, LC-MS	N.D.	10
Extractable Perfluorooctane sulfonates (PFOS)	mg/kg	EPA 3540C: 1996, LC-MS	N.D.	10

**Note:**

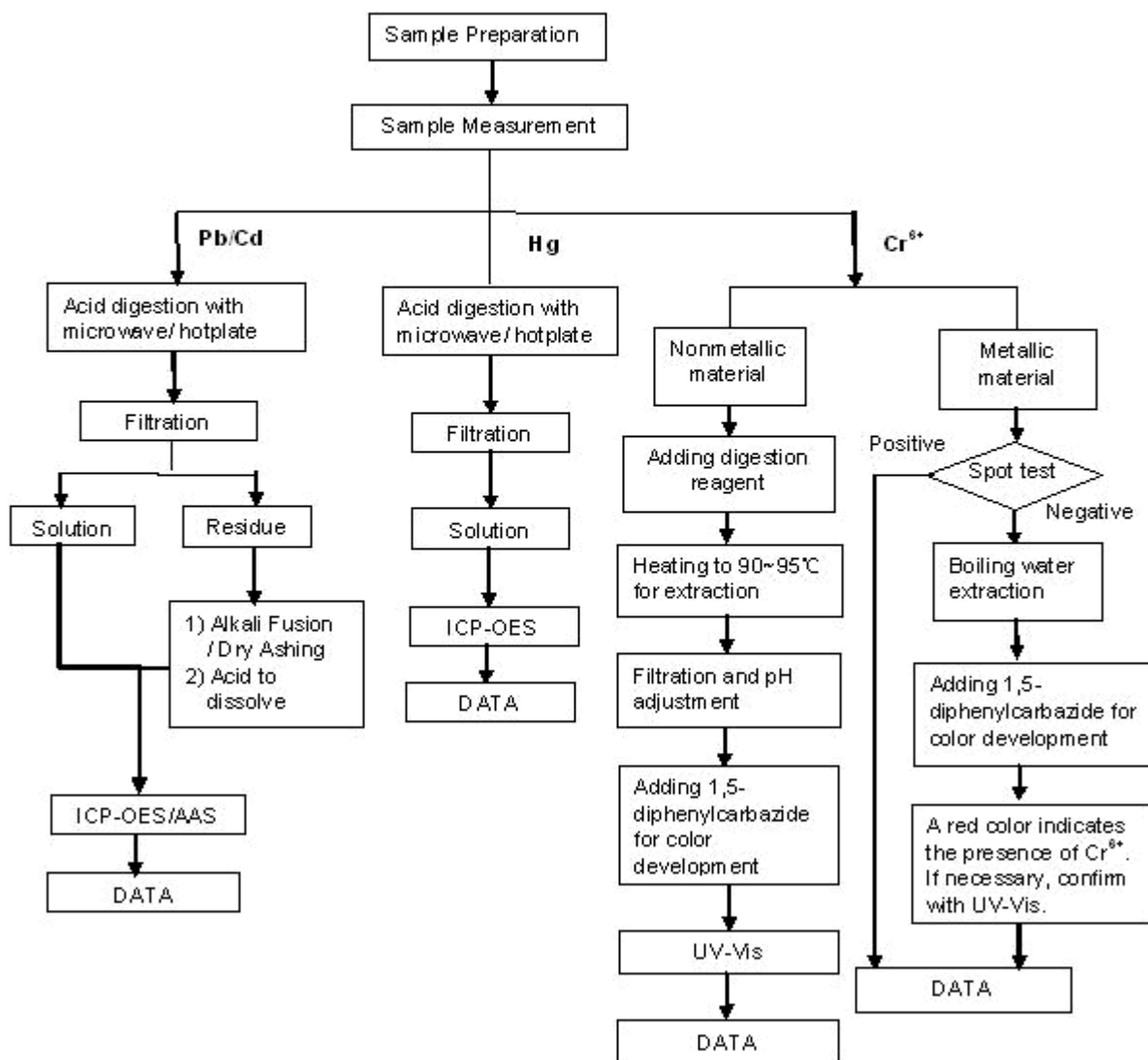
1. mg/kg = ppm
2. N.D. = Not Detected (< MDL)
3. MDL = Method Detection Limit

This document is issued by the Company under its General Conditions of Service printed overleaf or available on request and accessible at [http://www.sgs.com/terms\\_and\\_conditions.htm](http://www.sgs.com/terms_and_conditions.htm). Attention is drawn to the limitation of liability, indemnification and jurisdiction issues defined therein. Any holder of this document is advised that information contained hereon reflects the Company's findings at the time of its intervention only and within the limits of Client's instructions, if any. The Company's sole responsibility is to its Client and this document does not exonerate parties to a transaction from exercising all their rights and obligations under the transaction documents. Any unauthorized alteration, forgery or falsification of the content or appearance of this document is unlawful and offenders may be prosecuted to the fullest extent of the law. Unless otherwise stated the results shown in this test report refer only to the sample(s) tested and such sample(s) are retained for 30 days only. This document cannot be reproduced except in full, without prior approval of the Company.

### ATTACHMENTS

#### Testing Flow Chart

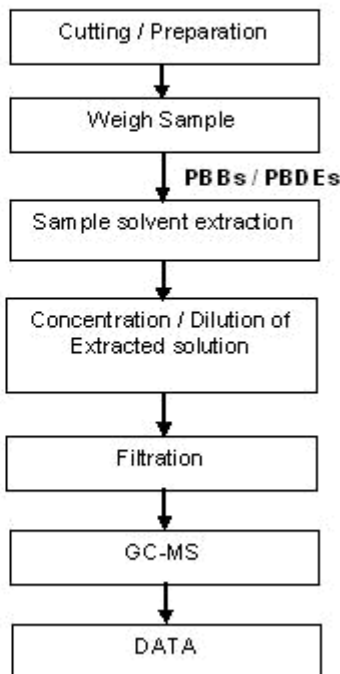
- 1) Name of the person who made measurement: Bowen Chen
- 2) Name of the person in charge of measurement: Adams Yu



This document is issued by the Company under its General Conditions of Service printed overleaf or available on request and accessible at [http://www.sgs.com/terms\\_and\\_conditions.htm](http://www.sgs.com/terms_and_conditions.htm). Attention is drawn to the limitation of liability, indemnification and jurisdiction issues defined therein. Any holder of this document is advised that information contained hereon reflects the Company's findings at the time of its intervention only and within the limits of Client's instructions, if any. The Company's sole responsibility is to its Client and this document does not constitute an offer of any service. Any unauthorized alteration, forgery or falsification of the content or appearance of this document is unlawful and offenders may be prosecuted to the fullest extent of the law. Unless otherwise stated the results shown in this test report refer only to the sample(s) tested and such sample(s) are retained for 30 days only. This document cannot be reproduced except in full, without prior approval of the Company.

### Testing Flow Chart

- 1) Name of the person who made measurement: Lina Tang
- 2) Name of the person in charge of measurement: Nina Wu



This document is issued by the Company under its General Conditions of Service printed overleaf or available on request and accessible at [http://www.sgs.com/terms\\_and\\_conditions.htm](http://www.sgs.com/terms_and_conditions.htm). Attention is drawn to the limitation of liability, indemnification and jurisdiction issues defined therein. Any holder of this document is advised that information contained hereon reflects the Company's findings at the time of its intervention only and within the limits of Client's instructions, if any. The Company's sole responsibility is to its Client and this document does not exonerate parties to a transaction from exercising all their rights and obligations under the transaction documents. Any unauthorized alteration, forgery or falsification of the content or appearance of this document is unlawful and offenders may be prosecuted to the fullest extent of the law. Unless otherwise stated the results shown in this test report refer only to the sample(s) tested and such sample(s) are retained for 30 days only. This document cannot be reproduced except in full without prior approval of the Company.

Sample photo:



SGS authenticate the photo on original report only

\*\*\* End of Report \*\*\*

This document is issued by the Company under its General Conditions of Service printed overleaf or available on request and accessible at [http://www.sgs.com/terms\\_and\\_conditions.htm](http://www.sgs.com/terms_and_conditions.htm). Attention is drawn to the limitation of liability, indemnification and jurisdiction issues defined therein. Any holder of this document is advised that information contained hereon reflects the Company's findings at the time of its intervention only and within the limits of Client's instructions, if any. The Company's sole responsibility is to its Client and this document does not exonerate parties to a transaction from exercising all their rights and obligations under the transaction documents. Any unauthorized alteration, forgery or falsification of the content or appearance of this document is unlawful and offenders may be prosecuted to the fullest extent of the law. Unless otherwise stated the results shown in this test report refer only to the sample(s) tested and such sample(s) are retained for 30 days only. This document cannot be reproduced except in full, without prior approval of the Company.